

# HOW BELL'S BREWERY INCREASED EFFICIENCY WITH IT DOCUMENTATION



## ABOUT BELL'S BREWERY



\* **Five sites** across the country with around **600 employees**

\* Largest **craft brewery** in the United States as of 2019

\* Creates a **wide range of year-round, seasonal and limited-production** beers

\* Established in **Kalamazoo, Michigan** in 1985



## THE CHALLENGES

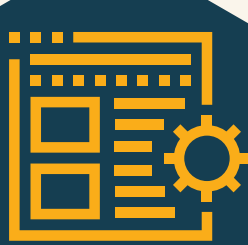
With 10 technicians spread over different sites, Bell's Brewery needed documentation to be in tiptop shape to ensure efficient time management.

Unfortunately, that was not the case.



Data from different locations was **spread out and difficult to access**

Most documentation was **incomplete and inaccurate**



The information was **unreliable and making timely decisions was difficult**

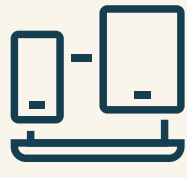
The company was **reliant on non-structured documentation tools** that wasted a lot of time



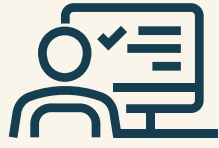
## IT Glue TO THE RESCUE!

"We stored all assets on sporadic spreadsheets, with different files located in different places, which resulted in data being spread out and difficult to access," shared William Richardson, Systems Administrator.

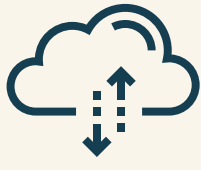
IT Glue helped them change for the better by:



Linking assets with their SOPs and passwords so users can find information quickly and easily



Warning of any potential threats to data with the **at-risk password report**



Providing hassle-free onboarding with intuitive and seamless **CSV upload method**

## IT GLUE: MORE THAN JUST IT DOCUMENTATION

IT Glue proved to be more than just a documentation tool for Bell's Brewery by:



Supporting **automated documentation** with a vast array of integrations



Employing PowerShell scripts to further **automate and streamline** their processes



Enabling **automated ticket opening** for new VMware virtual machines



Ensuring **easy onboarding/offboarding** for employees

Bell's Brewery was able to **consolidate, automate and streamline** the workflows of their IT department with the help of the following features:

Link assets with their SOPs and passwords altogether

Open API

Comprehensive **password management**

**Beyond-industry-standard** security measures

**Easy access** to contextual information



Learn more about how IT Glue can help **transform your business operations.**

**REQUEST A DEMO**