

UNLOCK THE FULL ROI POTENTIAL OF YOUR MICROSOFT ENVIRONMENT



CONTENTS

04

Building blocks of IT efficiency:
The 6 pillars of effective IT documentation

06

Nine steps
to demystify your Microsoft environment with Intelligent IT documentation

09

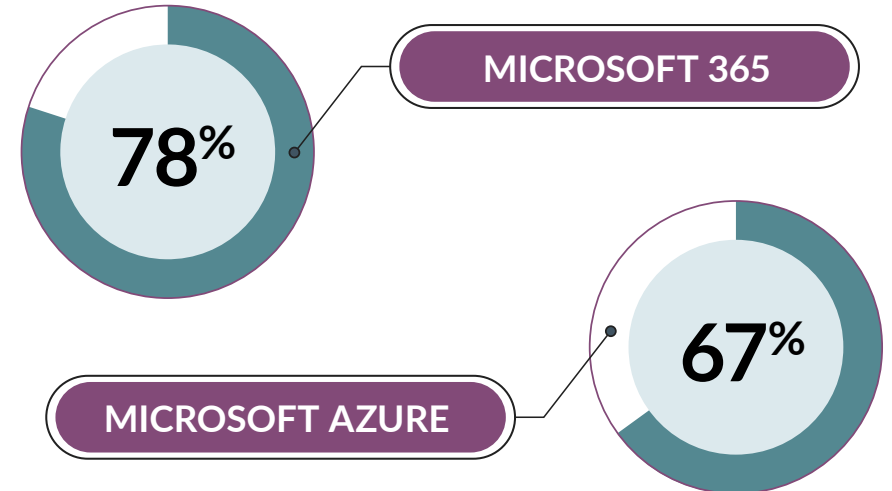
Take your IT documentation
to the next level with IT Glue

10

How IT Glue
is simplifying LSSSC's IT documentation

Today, organizations of all sizes and shapes are on a collective quest for IT modernization. Whether it's a thriving e-commerce venture that's looking to scale its operations, a hospital trying to improve its patient care or a corner mom-and-pop store carving out a space in the digital marketplace, IT modernization is pulsating through the veins of every business. Without IT modernization, businesses find it challenging to adapt to evolving customer demands, struggle to keep up with the competition and get exposed to security vulnerabilities. Not modernizing essentially means getting stuck in the slow lane while others speed ahead.

According to Aberdeen Strategy and Research's 2024 State of IT report¹, Microsoft's holistic ecosystem is the most popular platform among businesses to embark on their IT modernization and digital transformation journey. The report states that the most preferred office and business suite is Microsoft 365, used by 78% of businesses, and the top cloud choice is Microsoft Azure, used by 67% of them. Azure is also the most frequent second choice for organizations in multicloud environments.



¹ <https://www.spiceworks.com/research/state-of-it/>

While the Microsoft environment is a solid platform for enhancing IT capabilities, IT pros often find it overwhelming to navigate through its complex labyrinth of applications. Mission-critical IT information and knowledge are scattered across diverse applications and locations in a Microsoft environment, making it difficult for IT teams to get the right information at the right time. This leads to significant wastage of resources, time and money.

For instance, let's say an IT pro has to gather information about a particular user on the company's network.

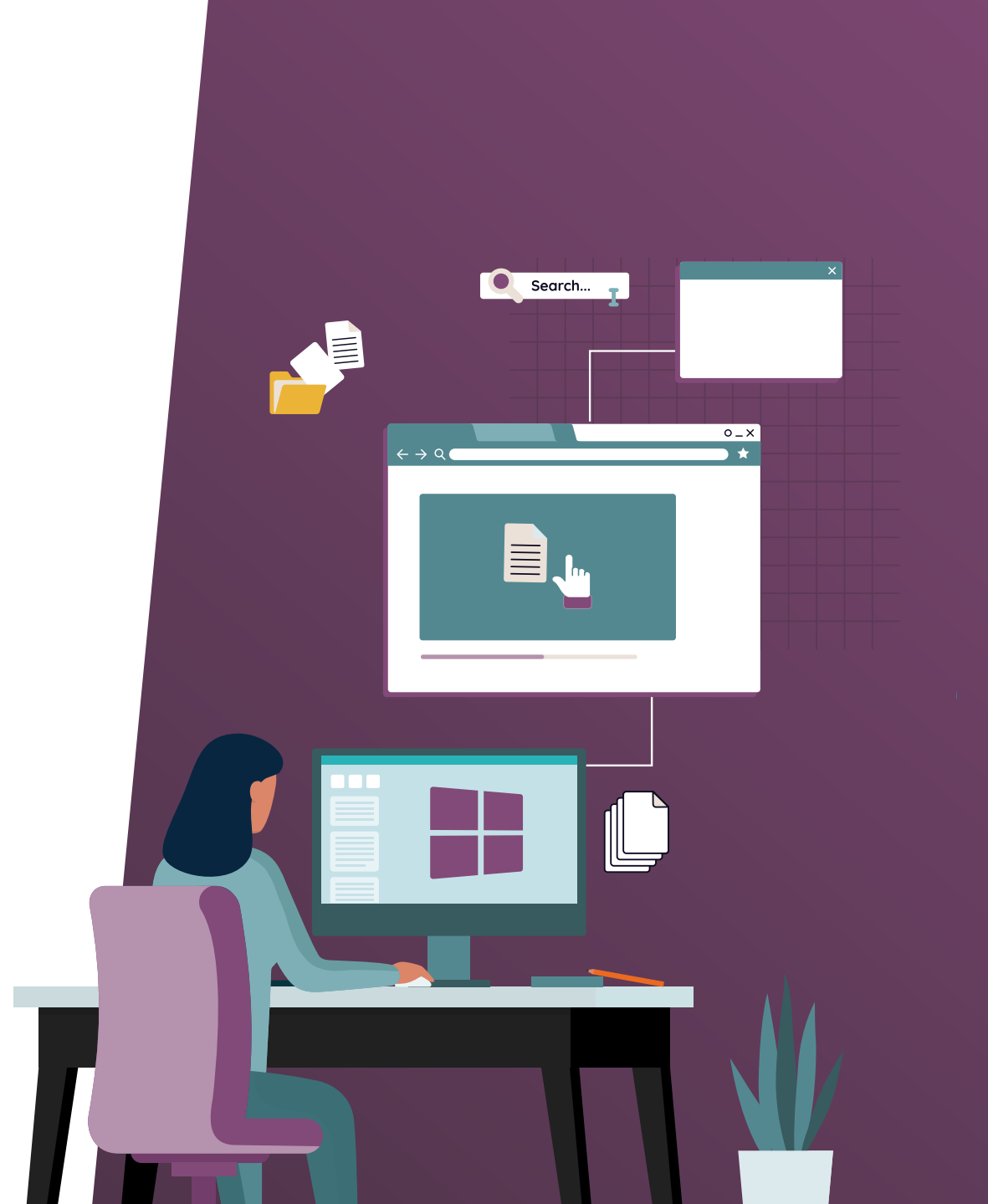
The IT professional would have to juggle through

[Active Directory](#) [Microsoft 365](#) [SharePoint](#) [Azure Portal](#)

to get complete information about the user. Even a simple task turns out to be a multistep, time-consuming endeavor in the end.

So, how can organizations demystify this complex landscape and unlock the full ROI potential of a Microsoft environment?

Not only does this eBook aim to help you achieve this, but it also discusses the six core components of efficient IT documentation and nine steps you can take to simplify your Microsoft environment. It will show you how to get complete visibility into your IT environment and streamline your IT operations so you can make the most out of Microsoft applications and services. Lastly, the eBook will help you discover how effective IT documentation helps you build a single source of truth for all your mission-critical IT information and knowledge.



BUILDING BLOCKS OF IT EFFICIENCY:

THE 6 PILLARS OF EFFECTIVE IT DOCUMENTATION

Let's look at the six core pillars that can make IT documentation a cinch and simplify your Microsoft world. Each of these elements plays a critical role in achieving consistent, transparent and efficient IT documentation, helping you realize the true potential of your Microsoft environment.

Centralized information repository

Having a centralized repository for your mission-critical IT information serves as the foundation for simplifying your IT environment. Every piece of information that is needed for the day-to-day functioning of the IT team should be consolidated and stored in a centralized hub.

Every article of IT knowledge about the environments you manage, including software and hardware information, passwords needed to access different tools, user details, secure sockets layer (SSL) and warranty data, standard operating procedures (SOPs) and processes must be in one interconnected and centralized system.

01

Collaboration and knowledge sharing

Having a centralized system for information is one thing, but for it to drive operational efficiency and organizational success, the information should be easily sharable. This allows IT knowledge and best practices to be shared across the team.

Imagine a scenario where you rely on one single individual to keep track of critical IT processes and vital asset details – and they leave the organization. Having a shared repository that fosters collaboration and information sharing would reduce any such reliance on individual expertise. Whether it's to easily share documentation across a team or to help new hires get up to speed swiftly, IT knowledge needs to be easily accessible.

02



Automated data collection

Your IT environment in itself is complex and documenting your IT environment shouldn't add to that complexity. With automated discovery and deep workflow integrations, your IT documentation solution should be able to automatically collect and update information from various sources and core tools so information on network devices, servers and applications is available when you need it.


03



Simplified troubleshooting

Leveraging intelligent structure and relationship mapping to organize information will, in turn, help your IT team simplify troubleshooting. For example, let's say a user is complaining about the inability to access an application. If you go to that user's profile, you should be able to see which security group they belong to, which device they use, which network they are connected to and so on. All such dependencies and historical data about the user in a structured manner will help the IT professional find the required information swiftly and fast-track the resolution process.

05



Structure and relationship mapping

Intelligent and purpose-built structure that aligns with your organization's needs is one key aspect of IT documentation. Creating a structure from the get-go for every item in your IT environment will make it a lot easier for your IT team to find and leverage information. With a smart structure in place, intelligent relationship mapping can then be leveraged to link every asset in your IT environment. When looking for a particular detail about a device, password or user, intelligent relationship mapping will help you find all the related information along with it.

04



Scalability and flexibility

As your IT environment keeps growing and changing, your IT documentation should also be able to adapt and scale to accommodate your evolving needs. This is another critical feature that will help you reduce the complexity of your IT environment.

06

NINE STEPS TO DEMYSTIFY MICROSOFT ENVIRONMENT WITH INTELLIGENT IT DOCUMENTATION

Understanding the core components of IT documentation is only the first step toward unlocking the full potential of your Microsoft environment. Without consolidated and structured IT documentation, your IT information will likely be scattered across diverse applications in your Microsoft environment. You need to effectively gather this information to understand your environment and unlock its true potential.

01 Identify key objectives



The first step is to identify the key objectives for your IT operations and how IT documentation can help.

Reduce complexity and simplify the processes and systems that you have in place

Create clear and concise standard operating procedures that act as a step-by-step guide for best practices.

Enhance your operational efficiency

Streamline operations and workflows through automation and smart integrations that consolidate your mission-critical assets and details. Cutting even two minutes per recurring task, which is the bulk of most IT technicians' workload, will lead to substantial time savings and efficiency gains.

Strengthen your security practices

Implement access controls with granular user permission settings to make sure everyone has access to only those things that are required for their job. With the addition of activity logs and revision history, you can rest assured that unwarranted access to your IT documentation will be reduced, bolstering your data security.

Improve resource utilization

Ensure comprehensive documentation of all assets and their critical details, as well as your daily processes, to maximize your existing equipment and personnel. With this practice in place, you can assess what can be improved upon and what's being underutilized. Implementing comprehensive documentation will also allow you to ensure that onboarding and training processes are setting all new members up for success from the get-go.

02 Assess your Microsoft environment



Once you have identified what your IT operations goals are, assess your Microsoft environment to find out where your different IT information is located. Where is your asset information, licensing details, passwords, SOPs, user data, etc., stored? Get a basic understanding of where all your mission-critical IT information is located.

03 Automate with intelligence-driven integrations



After identifying the critical points of information, you need to update them in your IT documentation solution. To achieve your IT goals efficiently and quickly, you should leverage deep and smart integrations that automatically document and update these critical pieces of siloed information in one place.

For instance, let's say you are using Intune for endpoint management. To centralize information from all Intune devices, you must consolidate data from Microsoft 365, Active Directory or Azure where user information may reside. Licensing details are typically found in Microsoft 365. Employing smart integrations automates the gathering of this data, streamlining workflows and optimizing resource utilization for enhanced efficiency.

04 Standardize with pre-built templates



Now, you need to customize all this IT information based on your business requirements. You can take advantage of an out-of-the-box template library, featuring checklist templates for process development, SOPs for custom knowledge base articles and structure templates for flexible asset documentation (e.g., LAN, Active Directory, applications, licenses). With an automated, flexible structure, start within minutes and effortlessly scale your IT documentation.

05 Map relationships



Mapping the relationship between all the different components of your Microsoft environment is essential to simplifying your IT environment and optimizing your workflows. Let's say you are checking a user's details. You should be able to effortlessly access their information in one place: contact info, mailbox details, Active Directory status, password expiration and security groups. This seamless view can be achieved by linking every documented piece of your IT infrastructure. Whether information is automatically imported through integrations or connected via relationship mapping, this approach maximizes efficiency, enabling you to quickly navigate and find the additional details you need while viewing any asset.

06 Track security



As an IT professional, you are responsible for a lot of sensitive data and information that should be protected from unauthorized access and other threats. It is thus important to implement access controls and user permissions that strictly adhere to your compliance and security standards. You should also ensure the security of your IT documentation and Microsoft environments by conducting regular security protocol audits. Consider setting up notifications to receive alerts for any detected suspicious activities, enhancing proactive monitoring and safeguarding measures.

07 Continuous improvement



To ensure effective utilization and maintenance of your IT documentation, establish a documentation culture. Make it a habitual practice for all team members to foster an ingrained commitment to documentation. It should be established as a part of every employee's workflow and needs to be monitored consistently for continuous improvement. One way to do this is by maintaining key performance indicators (KPIs) for different workflows and processes. For example, if you are getting a particular type of ticket at least 30 times each week, you can implement an SOP or structured process for that ticket. If you can save even five minutes on that ticket, that's two and a half hours saved in a week. You can also establish naming conventions so that it's easy for your team to find the information they need.

08 Further reduce IT complexity



Suppose you have successfully consolidated all your mission-critical IT information in one place, like your software, hardware, user information, SOPs, password policies, etc. In that case, you have established the foundation for your IT documentation. Now, your goal should be to reduce IT complexity further and make your IT documentation as data-rich as possible.

You should aim to bring in all the data from every tool and application that your IT teams use so that they have a single source of truth to understand and do their job. From networking, backup and endpoint applications to service delivery platforms, you should pull in and consolidate all the information from these tools in a single place. This way, you can have one single source of truth — one place to reference anything and everything that makes up your IT infrastructure.

09 Training and reinforcement



In order for the entire team to see the benefits and rewards of documentation, leadership sponsorship is required to show business-wide impacts. Getting employee buy-in, improving training and documentation engagement can be fast-tracked by building a positive feedback loop and developing KPIs to track this.

Continuous training and reinforcement are also critical in ensuring the success of your IT documentation. The employees need to understand the benefits of IT documentation and how it can improve their workflow and productivity. They need to be consistently engaged in the process.

One way to create a positive feedback loop for your IT documentation is by gamifying it. You can include documentation SOPs in the annual review of employees and reward them for their good performance.



TAKE YOUR IT DOCUMENTATION TO THE NEXT LEVEL WITH IT GLUE

As IT environments get increasingly complex, having an intelligent IT documentation solution is no longer a nice-to-have but rather a must-have. As you embrace hybrid and multicloud environments and manage disparate solutions to modernize your IT processes, your mission-critical IT information gets dispersed across different applications and locations. If you are looking for an IT documentation solution to simplify your growing IT environment and maximize its potential, look no further.



IT Glue is an award-winning SOC 2 Type II compliant documentation management platform that makes your IT documentation efficient and effortless.

Purpose-built for IT teams, IT Glue consolidates all your mission-critical IT information in one place so that your IT team has easy access to information they need, when they need it, including assets, passwords, users and SOPs. As your IT team can easily access all the information on the go, it simplifies your IT environment and enhances your operational efficiency.

Notably, IT Glue's out-of-the-box intelligence-driven templates help you get started with efficient IT documentation in no time. The solution also has dozens of integrations with major PSA, RMM, BDR and other platforms alongside its public API, making it the single source of truth for your IT team.



HOW IT GLUE

IS SIMPLIFYING LSSSC'S IT DOCUMENTATION

Let's see how The Lutheran Social Services Foundation of Southern California (LSSSC), a non-profit organization, simplified its IT environment, enhanced its operational efficiency and drastically improved its auditing practices with IT Glue.



The Challenge

LSSSC regularly receives donations and grants from various organizations and government agencies. They wanted to keep track of everything so they could instantly provide documentation when required. They also wanted to consolidate all their information in one place so their IT team could perform their daily tasks easily. LSSSC was thus looking for a robust solution that could help them improve both their auditing processes as well as operational efficiency. That's why the organization onboarded IT Glue.



The Solution

IT Glue turned out to be an excellent fit for LSSSC. IT Glue's out-of-the-box integrations with their platforms like Microsoft 365, Meraki, PSA Autotask, Unitrends and Spanning helped them bring all their critical information in one place and enhance their team's operational efficiency.



The Results

IT Glue also helped LSSSC drastically improve its auditing process. Earlier, during audits, the LSSSC team used to send out the invoices and hoped that the audit team would approve them. However, after implementing IT Glue, it takes them less than 10 minutes to complete an audit report. They now also have complete confidence that the audit team won't come back for additional information.

Secure, Mature and Integrated Documentation



Make documentation easy

Create and store KB, checklists and SOP articles effortlessly, embed rich network diagrams or import Word documents so your team is empowered to train and help themselves.



See the complete picture

Link related items together, so that all the information you need is at your fingertips. Rapidly define and understand relationships between various elements of your documentation.



Secure your critical information

Sleep better with next-level password management featuring access control, host-proof hosting, at-risk password report and audit trail.



Build a documentation culture

Edit and collaborate directly within the platform. Automatically save and sync to ensure your documents are always up to date for all team members.

Trusted by More than 13,000 Partners in 70+ Countries



Safeguard Your IT Operations with Secure Documentation

Request a Demo

When it comes to data security, **IT Glue** is second to none. We have achieved a SOC 2 Type-2 attestation, a set of data security and service controls that can only be maintained through ongoing, company-wide commitment.

